



XF Solutions



OneBit Option

Screen proofs ensure reliability

Quality and reliability are crucial factors for ensuring high customer satisfaction. That is why, when it comes to critical applications, everyone involved in production is committed to ensuring that proof and production run match exactly. Only a screen proof can offer this level of reliability.

The screen you proof is the screen you print

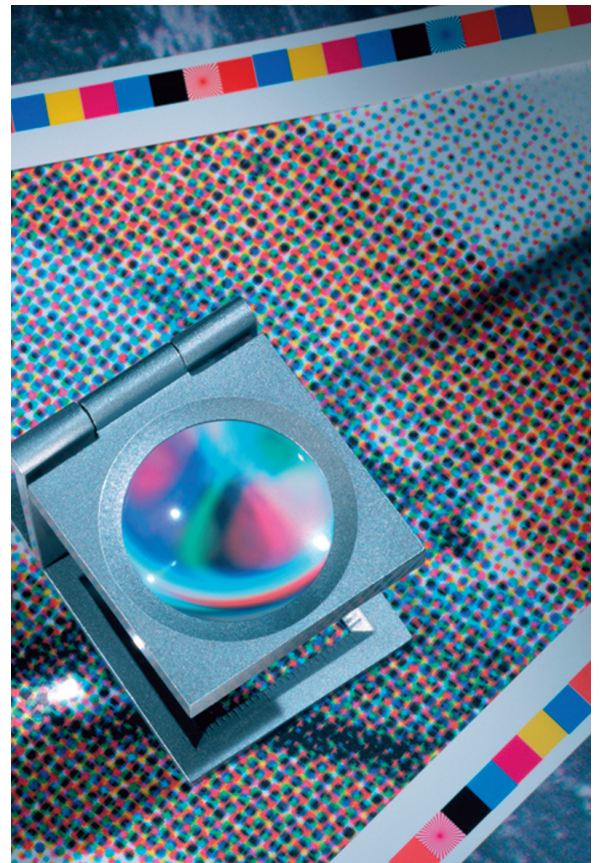
The OneBit Option works according to the „RIP Once Output Many“ concept, i.e. the system utilizes the screen data that the production RIP has calculated for output on the filmsetter or platesetter. This ensures that the proof has the same screen structure as the production run (screen dot shape, screen angle, screen ruling and screen dot size).

The proof is identical to the final exposure generated, giving you an accurate representation of the final print which means errors can be identified and prevented early on. Moirés, artefacts and trapping errors can also be picked up, as can colour deviations and content errors.

High degree of security

This option allows you to provide your customers with an assurance that the job exactly matches the proof they have already approved. As a result, your customer satisfaction will grow and subsequent discussions about quality and discounts will become a thing of the past.

At the same time, you can prevent prepress and pressroom production errors and make time and material savings along the complete production line. What's more, lower material costs and more efficient use of production capacity will ensure a fast ROI.





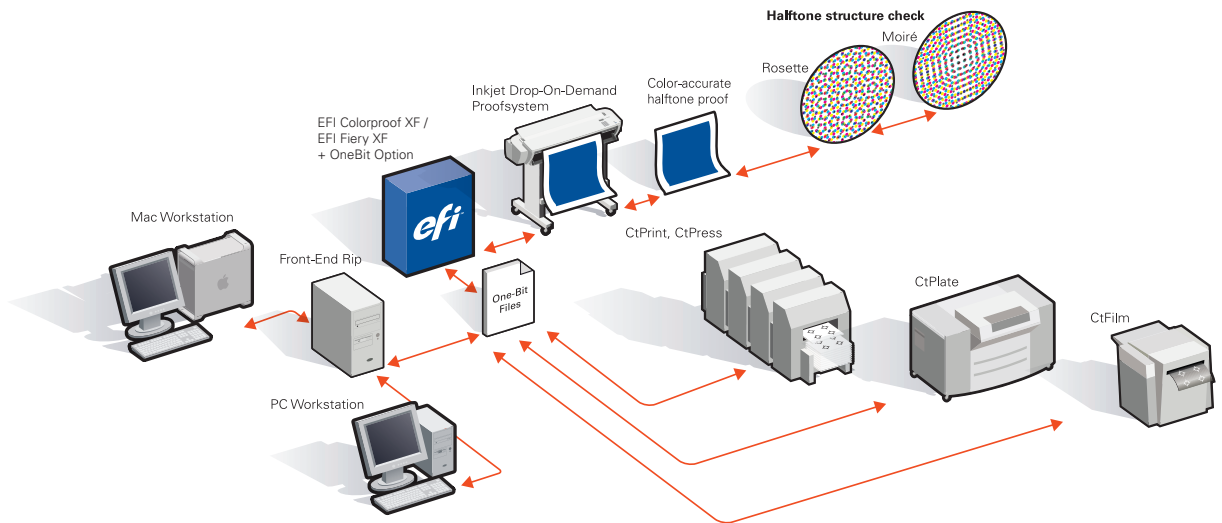
XF Solutions



EFI's portfolio of integrated solutions increases productivity and improves your bottom line. Find out more at www.efi.com.

Specifications

- Creation of colour accurate contract screen proofs from original one-bit files
- Creation of imposition screen proofs for content checking only
- Processing of original one-bit files from existing imagesetter or platesetter RIPs (R.O.O.M = RIP Once Output Many concept)
- Print prediction of the screen dot shape, screen angle, screen ruling and screen dot size
- Check of possible moirés
- Supported one-bit file formats
 - Tiff G4
 - Tiff G3
 - Packbit
 - LZW compressed Tiff
 - uncompressed Tiff
 - Presstek
 - Huffman
 - PCX
 - Len
 - Harlequin Pagebuffer
 - Founder
 - Brainnew
 - DCS1/DCS2 (Copy-dot format)



EFI Graphic Arts Solutions

EFI B.V.
Boeing Avenue 201-207
1119 PD Schiphol-Rijk
The Netherlands
+31 [0]20 658 8000 tel
+31 [0]20 658 8001 fax
www.efi.com

Auto-Count, Bliss, Changing the Way the World Prints, ColorWise, Command WorkStation, DocBuilder, DocBuilder Pro, DocStream, EDOX, EFI, Fiery, the Fiery logo, Fiery Driven, the Fiery Driven logo, OneFlow, PrinterSite, PrintFlow, PrintMe, PrintSmith Site, Prograph, Proteus, RIP-While-Print, Setting the Standard in Digital Printing, Ultravu and VUTEK are registered trademarks of Electronics For Imaging, Inc. in the U.S. Patent and Trademark Office and/or certain other foreign jurisdictions. Bestcolor is a registered trademark of Electronics For Imaging GmbH in the U.S. Patent and Trademark Office. AutoCal, Balance, BioVu, BioWare, Build, ColorCal, Digital StoreFront, Estimate, Fiery Link, Fiery Prints, Fiery Spark, FreeForm, Hagen, Jetrion, Logic, MicroPress, PhotoXposure, Printcafe, PrintSmith, PSI, PSI Flexo, Remoteproof, RIPChips, Scan, Screenproof, SendMe, Splash, Spot-On, UltraTex, UV Series 50, VisualCal, WebTools, the EFI logo, the Fiery Prints logo and Essential to Print are trademarks of Electronics For Imaging, Inc. Best, the Best logo, Colorproof, PhotoXposure, Remoteproof, and Screenproof are trademarks of Electronics For Imaging GmbH. All other terms and product names may be trademarks or registered trademarks of their respective owners, and are hereby acknowledged.

© 2009 Electronics for Imaging

D028.02.09_UK