



XF Solutions



Spot Color Option

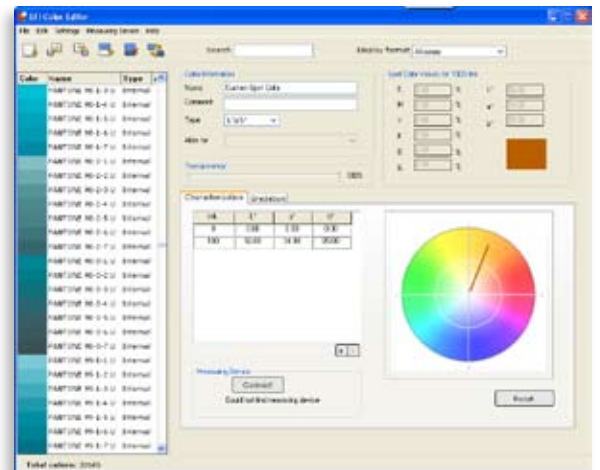
Spot colours ensure individuality

Achieving consistent colours across all media is vital for ensuring a company presents a seamless corporate identity. Corporate and business colours are therefore defined as spot colours to ensure a uniform identity and to maintain brand image. The Spot Color Option enables you to offer your customers the correct reproduction of their own custom colours.

Perfect colour for every company

The Spot Color Option enables simple processing and true-colour output of jobs with spot colours. The solution allows for an unlimited number of spot colours per job, meaning there are no limits to what you can achieve, nor any constraints on your customers' requirements.

Close cooperation with the leading providers of spot colour systems such as Pantone, HKS, Toyo and DIC ensures that the EFI Colorproof XF and EFI Fiery XF definitions match the original definitions. The complete special colour libraries for Pantone, HKS and HKS 3000 Plus, Toyo and DIC are included.



Functions to tackle the toughest demands

The Spot Color Option offers a number of high-performance functions that even satisfy the comprehensive requirements of the packaging industry, e.g. functions for defining spot colours, their transparency, additional gradation curves and much more.



XF Solutions



EFI's portfolio of integrated solutions increases productivity and improves your bottom line. Find out more at www.efi.com.

Specifications

- Spot color definition of full tones and shades, manual and measurement based
- Spot color definition in L*a*b* (measured and manually), CMYK/CMYKOG/CMYKRGB (manually in %) and inkjet CMYK/CMYKOG/CMYKRGB (pure printer inks, manually in %)
- Definition of spot color transparency per spot color and per spot color table
- Unlimited number of spot colors supported per job
- Spot color measurement out of application
- Definition of gradation curve in per cent, combinable with measured characterization data
- Alias function (Link spot color to another pre-defined spot color)
- Process colors Cyan, Magenta, Yellow, Black can be defined as or replaced by spot colors (e.g. Warm Red replaces Magenta)
- Spot color libraries for DIC, HKS (E, K, N, Z, K 3000 plus, N 3000 plus), Pantone, Toyo built-in
- Custom spot colors

Supported measuring devices:

Barbieri

- Spectro LFP
- Spectro LFP Basic

EFI

- Best Eye
- ES-1000

X-Rite

- DTP20 PULSE
- Eye-One™



EFI Graphic Arts Solutions

EFI B.V.
Boeing Avenue 201-207
1119 PD Schiphol-Rijk
The Netherlands
+31 (0)20 658 8000 tel
+31 (0)20 658 8001 fax
www.efi.com

Auto-Count, Bliss, Changing the Way the World Prints, ColorWise, Command WorkStation, DocBuilder, DocBuilder Pro, DocStream, EDOX, EFI, Fiery, the Fiery logo, Fiery Driven, the Fiery Driven logo, OneFlow, PrinterSite, PrintFlow, PrintMe, PrintSmith Site, Prograph, Proteus, RIP-While-Print, Setting the Standard in Digital Printing, Ultravu and VUTEk are registered trademarks of Electronics for Imaging, Inc. in the U.S. Patent and Trademark Office and/or certain other foreign jurisdictions. Bestcolor is a registered trademark of Electronics For Imaging GmbH in the U.S. Patent and Trademark Office. AutoCal, Balance, BioVu, BioWare, Build, ColorCal, Digital StoreFront, Estimate, Fiery Link, Fiery Prints, Fiery Spark, FreeForm, Hagen, JetTrion, Logic, MicroPress, PhotoXposure, Printcafe, PrintSmith, PSI, PSI Flexo, Remoteproof, RIPChips, Scan, Screenproof, SendMe, Splash, Spot-On, UltraTex, UV Series 50, VisualCal, WebTools, the EFI logo, the Fiery Prints logo and Essential to Print are trademarks of Electronics for Imaging, Inc. Best, the Best logo, Colorproof, PhotoXposure, Remoteproof, and Screenproof are trademarks of Electronics For Imaging GmbH. All other terms and product names may be trademarks or registered trademarks of their respective owners, and are hereby acknowledged.

© 2010 Electronics for Imaging

D011.01.10_UK