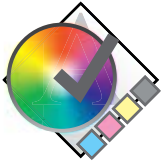




# XF Solutions



## Color Verifier Option

### Quality assurance for your colours

The Color Verifier Option is a convenient, easy-to-use solution for your internal and external quality assurance. It can be employed to measure and compare colour values and is an essential tool for successful and reliable proofing.

#### Reliable color control

When operating a digital workflow it is critical that everyone involved is talking about the same colours. The challenge is to prove colour reliable on reproducibility in the final print run. The verification of the colour and the comparison to a standardized or individual reference is indispensable to master this challenge.

The Color Verifier Option is the ideal solution for this task. It enables you to easily measure and compare colour values. This option is the essential tool to verify proofs according to the ISO 12647-7 and -8 (definitions for contract proofing and validation printing) or to the G7™ definitions.

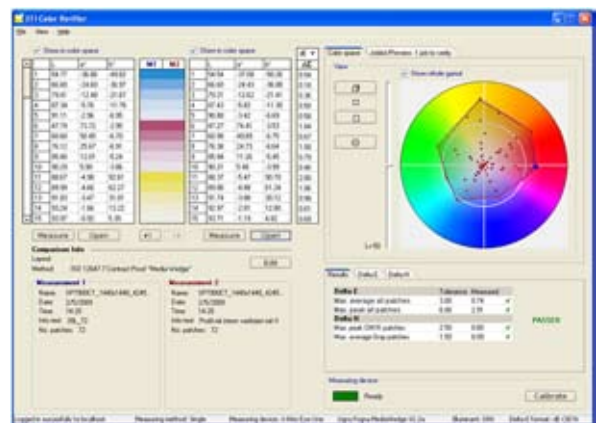
Furthermore the option can easily help you to compare e.g. proof with proof, proof with print or profile with profile. The Color Verifier Option is the indispensable tool for quality assurance, independent of the type of verification you plan to do.

To offer you the greatest flexibility possible, the Color Verifier Option supports a vast range of measuring devices and control strips including those from the Ugra/Fogra and IDEAlliance. And if you have the need to define individual quality standards Color Verifier Option allows you to do this as well.

#### Remote proofing made easy

The Color Verifier Option makes it easy to coordinate and fine-tune even when users are scattered over different locations. It is an essential tool for remote proofing. The time-consuming and costly dispatch of printouts belongs to the past.

The remote proofing concept is based on mutual exchange and approval between sender and recipient. Output remote job and measure it. The remote job including all relevant information such as reference profile, spot colours and colour measurement values, etc. is then passed on to your partner in a data container. Your partner also outputs the remote job and measures it. The Color Verifier Option now compares the measured values and presents you with the result. If the data is within the defined tolerances you can be sure that a correct printout will be produced quickly and without additional cost.





# XF Solutions



EFI's portfolio of integrated solutions increases productivity and improves your bottom line. Find out more at [www.efi.com](http://www.efi.com).

## Specifications

- Measurement-based verification tool to check
  - proofs in accordance with industry standards defined in ISO 12647-7 / 8 for contract proofing and validation printing and G7
  - colour consistency of proofs, prints and profiles
- Measurement-based comparison of either profile-to-proof, proof-to-proof, proof-to-print, print-to-print, profile-to-print or profile-to-profile
- Presets for ISO 12647-7 / 8 and G7 compliant verification
- Custom-made presets definable for individual quality standards
- Support of Ugra/Fogra media wedge v2.2 / v3.0 and IDEAlliance ISO 12647-7 2009 Color Control Strip
- Support of EFI Dynamic Wedge
- Support of additional control strips possible
- Printable, extensive ISO compliant report for analysis purposes
- ISO compliant summary for daily proof production, printable on label (supporting DYMO LabelWriter Series 320, 330Turbo, 400, 400 Twin Turbo and 400 Duo) or laser printers via PDF export
- Support of latest characterisation data for ISO compliant verification
- Multi- or single spot measuring
- Measuring value display in L\*a\*b\*, LCH, XYZ, RGB or density values in CMYK
- Type of norm light (D50, D65 or C) definable
- Two-way exchange of the measured results via JDF between sender and recipient
- 2D and 3D visualization of color gamuts
- Out-of-gamut checking for spot colors
- Export of measurement readings via clipboard

## Supported measuring devices:

### Barbieri

- Spectro LFP
- Spectro LFP Basic
- Spectro Swing

### EFI

- Best Eye
- ES-1000

### Epson

- SpectroProofer

### HP

- HP embedded spectrophotometer

### X-Rite

- DTP20 Pulse
- DTP41
- DTP70
- Eye-One
- Eye-One iO
- Eye-One iSis
- iCColor
- Spectroscan



EFI Graphic Arts Solutions

EFI B.V.  
Boeing Avenue 201-207  
1119 PD Schiphol-Rijk  
The Netherlands  
+31 (0)20 658 8000 tel  
+31 (0)20 658 8001 fax  
[www.efi.com](http://www.efi.com)

Auto-Count, Bliss, Changing the Way the World Prints, ColorWise, Command WorkStation, DocBuilder, DocBuilder Pro, DocStream, EDOX, EFI, Fiery, the Fiery logo, Fiery Driven, the Fiery Driven logo, OneFlow, PrinterSite, PrintFlow, PrintMe, PrintSmith Site, Prograph, Proteus, RIP-While-Print, Setting the Standard in Digital Printing, Ultravu and VUTEk are registered trademarks of Electronics for Imaging, Inc. in the U.S. Patent and Trademark Office and/or certain other foreign jurisdictions. Bestcolor is a registered trademark of Electronics For Imaging GmbH in the U.S. Patent and Trademark Office. AutoCal, Balance, BioVu, BioWare, Build, ColorCal, Digital StoreFront, Estimate, Fiery Link, Fiery Prints, Fiery Spark, FreeForm, Hagen, JetTrion, Logic, MicroPress, PhotoXposure, Printcafe, PrintSmith, PSI, PSI Flexo, Remoteproof, RIPChips, Scan, Screenproof, SendMe, Splash, Spot-On, UltraTex, UV Series 50, VisualCal, WebTools, the EFI logo, the Fiery Prints logo and Essential to Print are trademarks of Electronics for Imaging, Inc. Best, the Best logo, Colorproof, PhotoXposure, Remoteproof, and Screenproof are trademarks of Electronics For Imaging GmbH. All other terms and product names may be trademarks or registered trademarks of their respective owners, and are hereby acknowledged.

© 2010 Electronics for Imaging

D010.01.10\_UK