



# XF Solutions



## Color Manager Option

### First-rate ICC profiling tool

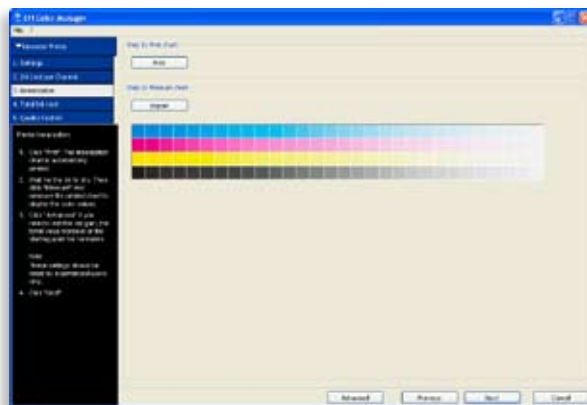
Boost the performance of your Inkjet proofer, large, wide or super-wide format printer! The Color Manager Option completes your EFI Colorproof XF / EFI Fiery XF package of ICC-based tools and enables the creation of ICC profiles, leading to the best possible results and growing customer satisfaction.

#### ICC profiles for first-class results

The XF Server features a professional colour management tool that you can scale up with the Color Manager Option. This option enables you to create your own ICC colour profiles quickly and easily. Media profiles describe the colour characteristics of particular combinations of printer, media and ink. Reference profiles describe the printing condition of a conventional or digital printing process. Creating customised ICC profiles enables you to utilize the particular features of your media printer and production device to their fullest. Combined with the Color Managers ability to optimise the match from reference to media profile with optimisation profiles (3CC's), you have access to an incredibly powerful colour management tool. You will be enthused about the vibrant and accurate colours your printers can achieve thanks to the EFI Color Manager Option!

#### Professional system support

The intuitive user interface and integrated expert knowledge supports you when it comes to creating your profiles. You simply print various test charts and measure these with one of the supported spectrophotometers – the software automatically calculates the optimal settings without taking away the freedom of custom adjustments. This ensures you get the very best results regardless of your previous knowledge. White point editing enables you to adjust existing media and reference profiles to different coloured media at any time. In addition to various profiling chart standards, such as IT8.7/3, ECI2002 and IT8.7/4, the Color Manager Option contains a unique profiling chart with 46 patches which you can output in the normal production run and subsequently measure. As a result, you can produce an ICC reference profile for an offset press in a cost-effective and time-conscious manner without requiring an additional proof print.





# XF Solutions



EFI's portfolio of integrated solutions increases productivity and improves your bottom line. Find out more at [www.efi.com](http://www.efi.com).

## Specifications

- Simple, step-by-step creation of ICC profiles
- ICC media profile creation
- ICC reference profile creation
- ICC device link profile creation
- Creation of »averaged« ICC reference profiles, based on a definable number of measurements
- Use of created ICC reference profiles as separation profiles
- Unique 46 patches EFI Offset Profiling Chart for sheet-fed and web offset ICC reference profile creation
- ICC multi color media profile creation up to 7 color channels

## Supported measuring devices:

### Barbieri

- Spectro LFP
- Spectro LFP Basic
- Spectro Swing

### EFI

- Best Eye
- ES-1000

### Epson

- SpectroProofer

### HP

- HP embedded spectrophotometer

### X-Rite

- DTP20 Pulse
- DTP41
- DTP70
- Eye-One
- Eye-One iO
- Eye-One iSis
- iCColor
- Spectroscan



EFI Graphic Arts Solutions

EFI B.V.  
Boeing Avenue 201-207  
1119 PD Schiphol-Rijk  
The Netherlands  
+31 (0)20 658 8000 tel  
+31 (0)20 658 8001 fax  
[www.efi.com](http://www.efi.com)

Auto-Count, Bliss, Changing the Way the World Prints, ColorWise, Command WorkStation, DocBuilder, DocBuilder Pro, DocStream, EDOX, EFI, Fiery, the Fiery logo, Fiery Driven, the Fiery Driven logo, OneFlow, PrinterSite, PrintFlow, PrintMe, PrintSmith Site, Prograph, Proteus, RIP-While-Print, Setting the Standard in Digital Printing, Ultravu and VUTEk are registered trademarks of Electronics for Imaging, Inc. in the U.S. Patent and Trademark Office and/or certain other foreign jurisdictions. Bestcolor is a registered trademark of Electronics For Imaging GmbH in the U.S. Patent and Trademark Office. AutoCal, Balance, BioVu, BioWare, Build, ColorCal, Digital StoreFront, Estimate, Fiery Link, Fiery Prints, Fiery Spark, FreeForm, Hagen, JetTrion, Logic, MicroPress, PhotoXposure, Printcafe, PrintSmith, PSI, PSI Flexo, Remoteproof, RIPChips, Scan, Screenproof, SendMe, Splash, Spot-On, UltraTex, UV Series 50, VisualCal, WebTools, the EFI logo, the Fiery Prints logo and Essential to Print are trademarks of Electronics for Imaging, Inc. Best, the Best logo, Colorproof, PhotoXposure, Remoteproof, and Screenproof are trademarks of Electronics For Imaging GmbH. All other terms and product names may be trademarks or registered trademarks of their respective owners, and are hereby acknowledged.

© 2010 Electronics for Imaging

D009.01.10\_UK